



**ECOLOGY PROJECT
INTERNATIONAL**



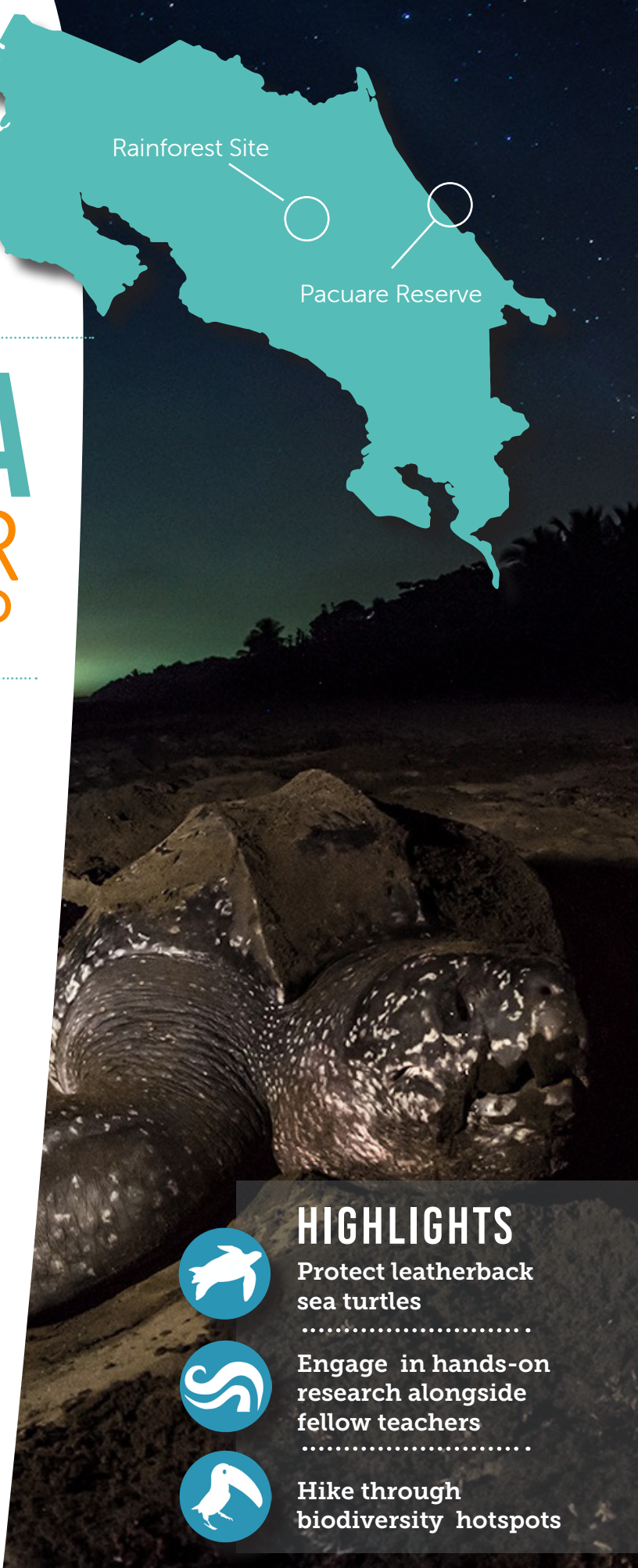
COSTA RICA TEACHER FELLOWSHIP

IN SEARCH OF LEATHERBACKS: You're walking along a dark sand beach at midnight. With a sky full of stars, all is silent as you look towards the rolling ocean. You're in search of the elusive, gigantic leatherback sea turtle and its hatchlings – and when you spot them, you'll help increase our understanding of and ability to conserve this keystone species.

YOUR FIELD WORK: EPI's Teacher Fellowship offers you an amazing opportunity to engage with Costa Rica's immense biodiversity, both on the coast and in the rainforest. While at our sea turtle reserve, you'll monitor the beach, guided by trained research assistants. Our instructors will introduce you to EPI's unique model for creating positive learning environments in the field and applying field science at home.

CULTURAL EXCHANGE: After completing your field work, you'll have the chance to visit a local high school and meet with local teachers and students.

Length	Professional Development Coursework	Focus
8 days	40 hours	sea turtle biology, rainforest ecology, conservation



HIGHLIGHTS

Protect leatherback sea turtles



Engage in hands-on research alongside fellow teachers



Hike through biodiversity hotspots



SAMPLE ITINERARY

Day 1: ARRIVE IN COSTA RICA

- Meet your instructor team and Fellow cohort
- Prepare for your adventure at EPI's campus outside San Jose

Days 2-5: PACUARE NATURE RESERVE

- Learn about sea turtle biology, ecology, and conservation issues
- Explore the amazing wildlife of lowland tropical ecosystems
- Collect data on nesting sea turtles during nightly turtle censuses
- Restore turtle nesting habitat on the beach

Days 6-7: CULTURAL EXCHANGE & RAINFOREST ADVENTURE

- Travel northwest to a private rainforest reserve
- Visit a Costa Rican high school where you'll meet local students and teachers
- Go rafting on a rainforest river

Day 8: DEPART FROM SAN JOSE INTERNATIONAL AIRPORT

LA RIVIERA HOTEL

La Riviera Hotel is located in Belén, a quiet town just northwest of San Jose. This comfortable hotel is a 20-minute drive from the airport, making it an ideal place to start or finish your course.

Room type	Running water	Hot water	Electricity
dormitory	✓	✓	✓

LODGE AT TIRIMBINA RESERVE

Tirimbina is an educational, scientific and ecotourism destination, situated in the forested northern region of Costa Rica, an ideal stopover en route to other adventures. You'll explore the trails, discover its flora and fauna, walk on suspension bridges, and uncover some of the rainforest's secrets.

Room type	Running water	Hot water	Electricity
dormitory	✓		✓

PACUARE RESERVE

With 6 km of beach and 1050 hectares of rainforest, Pacuare is an amazing place to explore forest trails and fully engage in the turtle census on the beach while working together with biologists, field assistants, and instructors. Pacuare has two stations, both with cozy cabins and shared bathrooms.

Room type	Running water	Hot water	Electricity
dormitory	✓		

COSTA RICA TEACHER FELLOWSHIP

Program
Partners:



PACUARE RESERVE
ECOLOGY PROJECT INTERNATIONAL

