



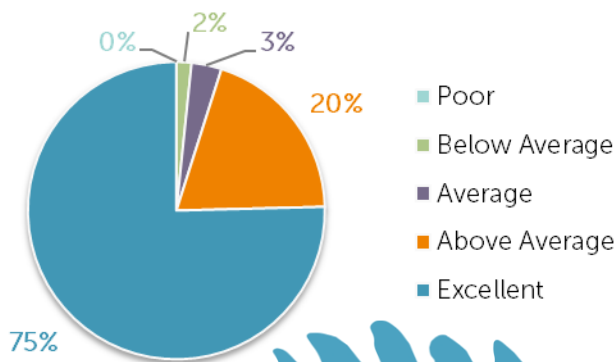
BELIZE MARINE ECOLOGY -2017 SEASON IMPACT SUMMARY-



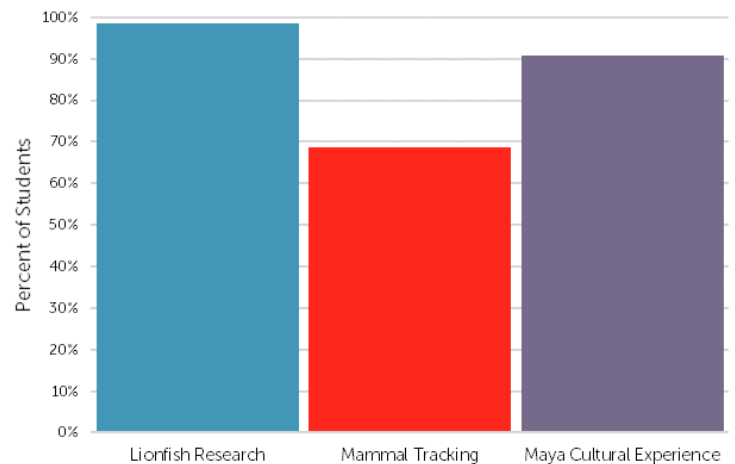
Linn-Benton Community College

7 Total Courses • 63 Total Visiting Students

Overall Satisfaction



Course Activity Satisfaction

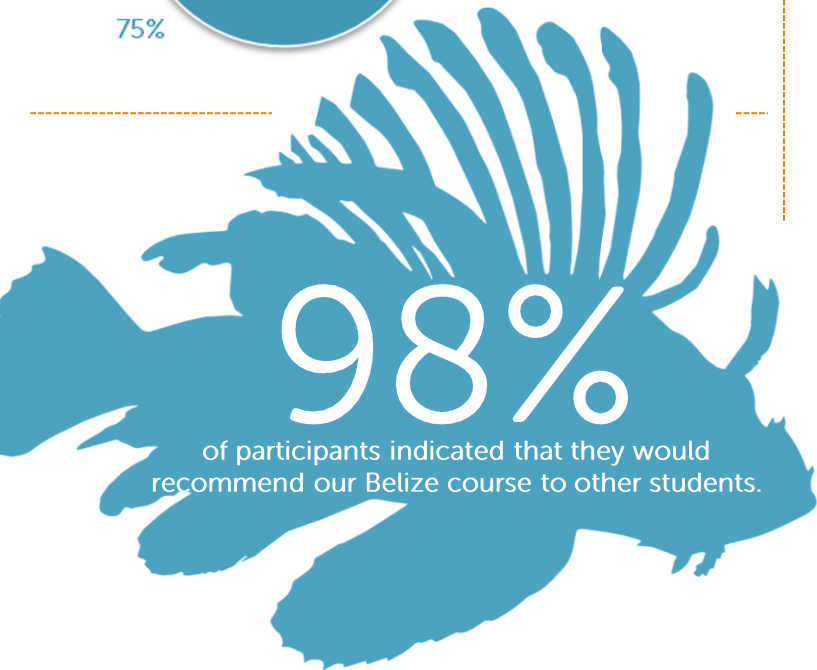


The above graph depicts the percentage of participants who indicated that a given course activity was **above average to excellent** on the post-course evaluation.

Impact on student self-efficacy and environmental sensitivity

% Change

I think that my actions are able to support conservation efforts	13%
I believe I can change the world with my actions	8%
I enjoy being outside in nature	3%



98%

of participants indicated that they would recommend our Belize course to other students.

Environmental Literacy

39 Student Assessments • 4 Courses • 62% of Students Assessed

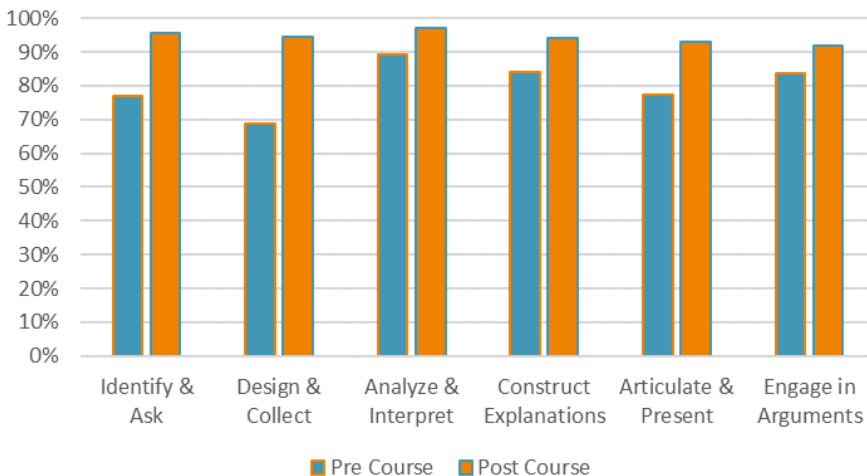
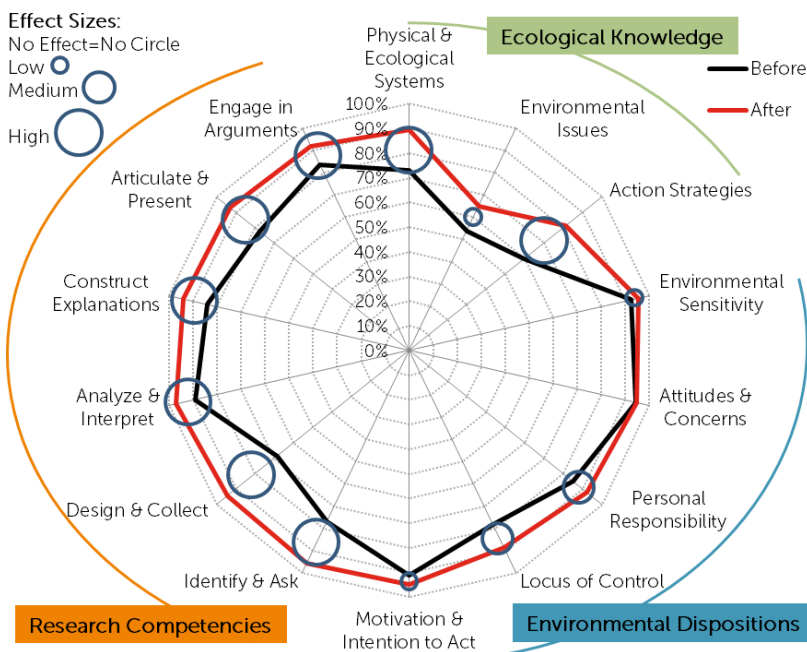
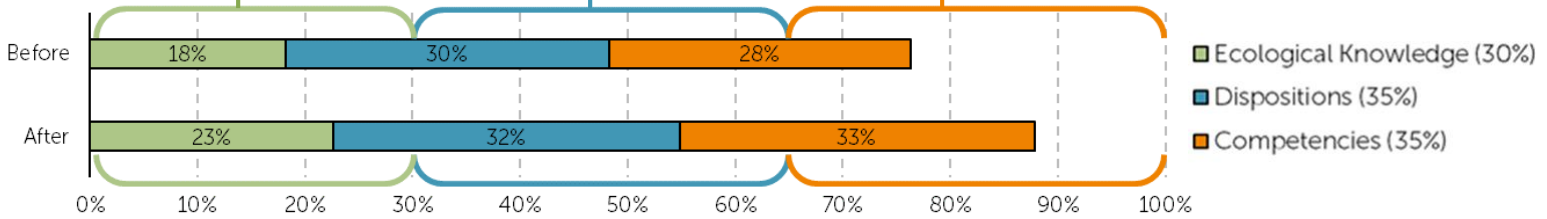
EPI measures our impacts on students in three areas: **ecological knowledge**, **dispositions**, and **competencies**.

Ecological knowledge is based on students' knowledge of physical and ecological systems, forms of citizen participation, and action strategies they can use to improve their environment.

Dispositions are students' perspectives on their influence and willingness to participate in environmental issues.

Competencies are clusters of skills and abilities that students develop and practice when analyzing scientific or environmental problems.

11%
OVERALL IMPROVEMENT



Students investigate a research question in small groups on course with guidance from EPI instructors. During this project they engage in each step of the scientific process and each student builds confidence in their ability to conduct research and communicate results.

The students on this trip improved most in their self-reported ability to **ask research questions** and **create and use a methodology**.

